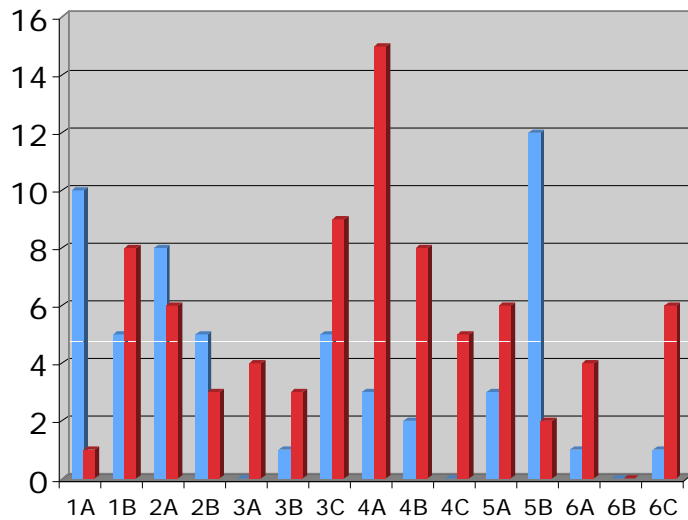


Wraparound Oregon: System Development Feedback November 2006

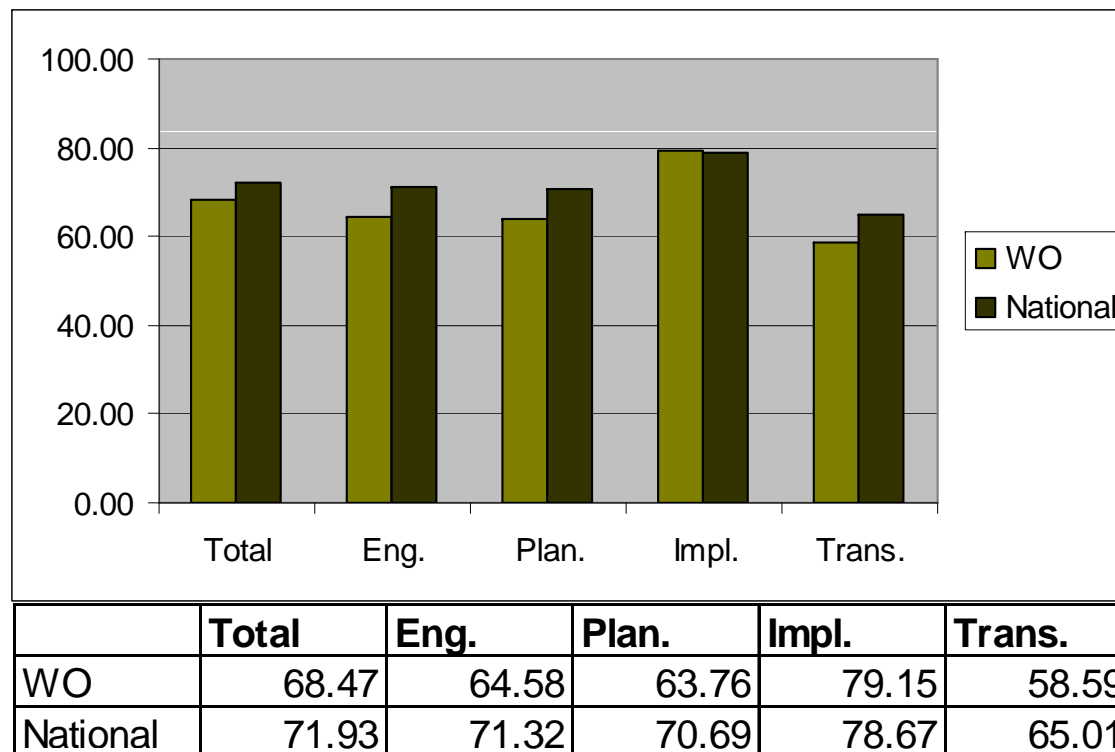


■ Successes
■ Priorities

1 Community Partnership	
1A	Formalized decision making structure
1B	Appropriate participation in the partnership
2 Collaborative Activity	
2A	Plan to turn vision into reality
2B	Joint action steps taken
3 Fiscal Tracking and Policies	
3A	Access to information about costs
3B	Shared fiscal responsibility
3C	Sufficient, flexible funding
4 Access to Supports and Services	
4A	Ready access to supports and services
4B	Developing new supports and services
4C	Adequate crisis response
5 Human Resource Development and Support	
5A	Appropriate case loads
5B	Adequate training, coaching, and supervision
6 Accountability	
6A	Outcome data
6B	Wraparound quality data
6C	Identifying and addressing grievances and barriers

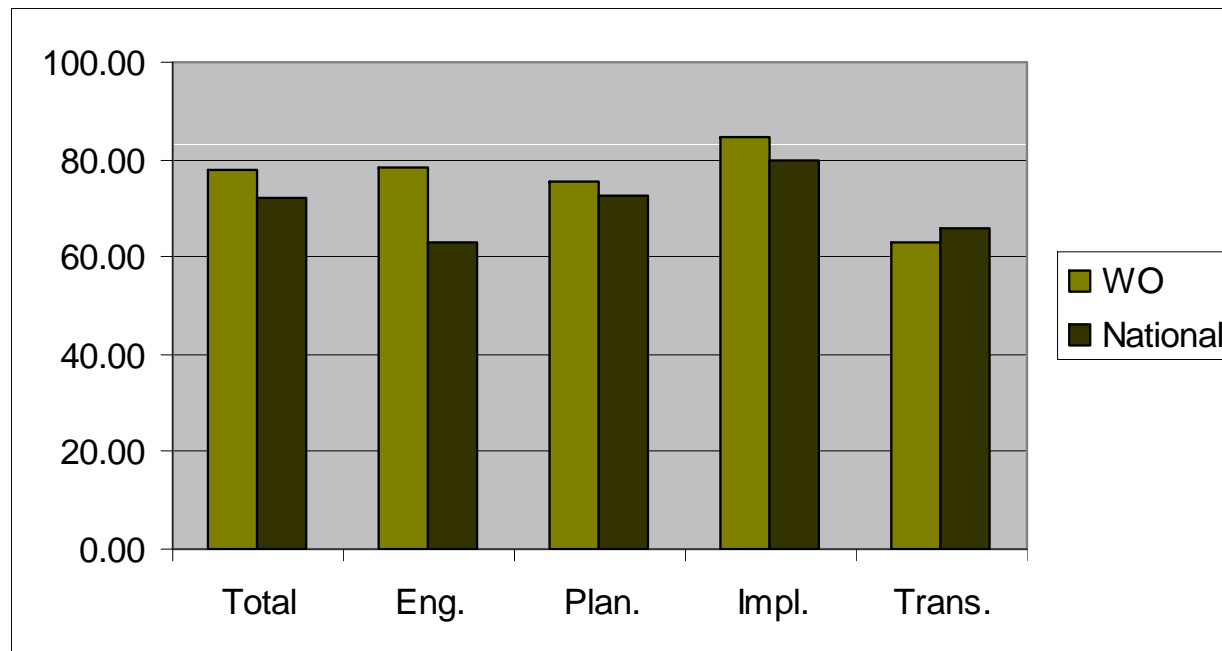
WFI: Caregiver

Wraparound OR/National Comparison



WFI: Youth

Wraparound OR/National Comparison



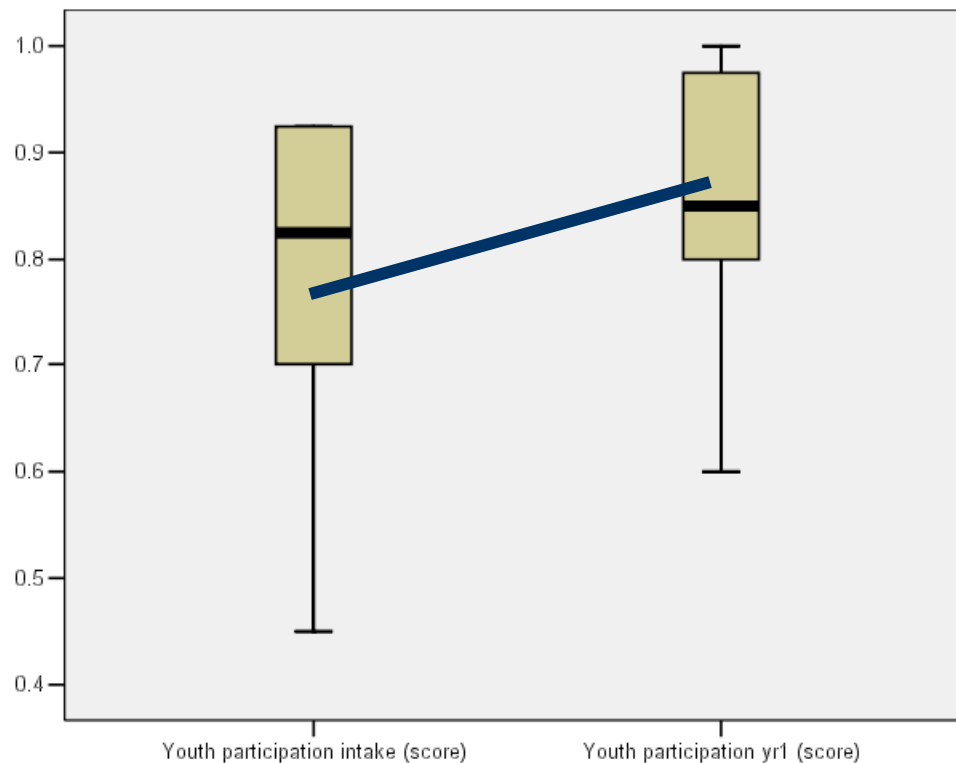
	Total	Eng.	Plan.	Impl.	Trans.
WO	77.69	78.33	75.45	84.48	62.75
National	72.11	62.94	72.77	79.86	65.94



Youth Self-Report Data

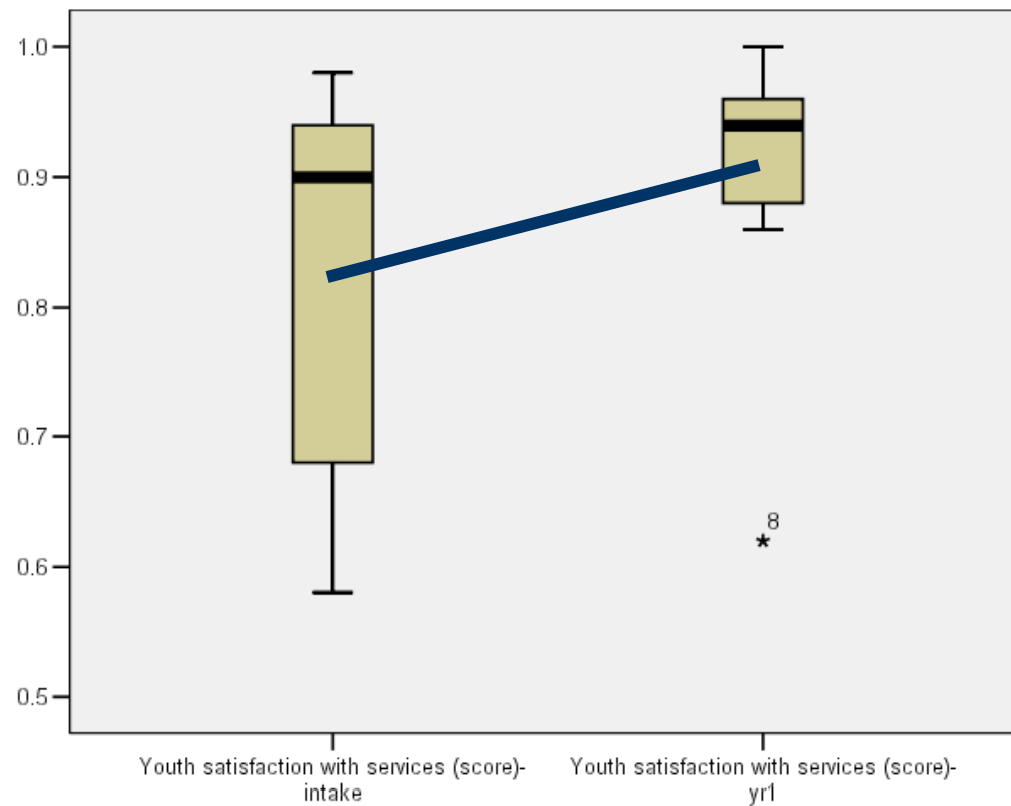
- ◆ Compares same youth at intake and after 1 year in Wraparound Oregon (or at exit if youth leaves before 1 year)
- ◆ Not a full sample– several youth declined and others don't return calls
- ◆ Difficult to resolve questions about the status of different youth (hiatus/discharged/never engaged)

Youth Participation in Planning: Intake to Year 1



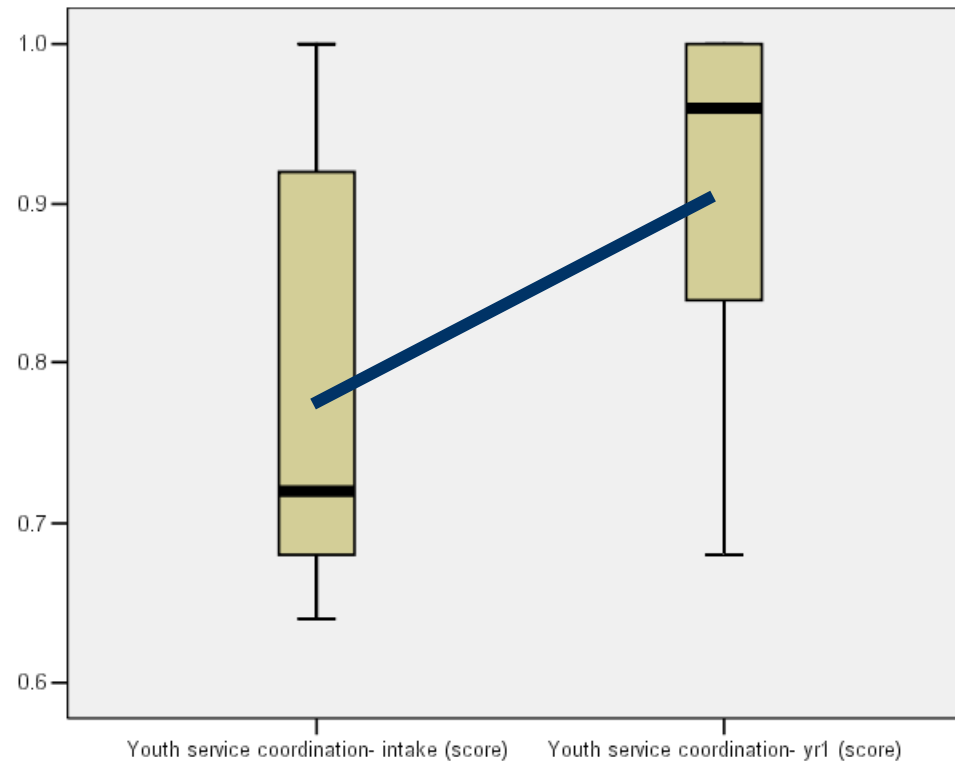
From the YPP: Intake mean: .76 Year 1 mean: .85

Youth Satisfaction w/Services: Intake to Year 1



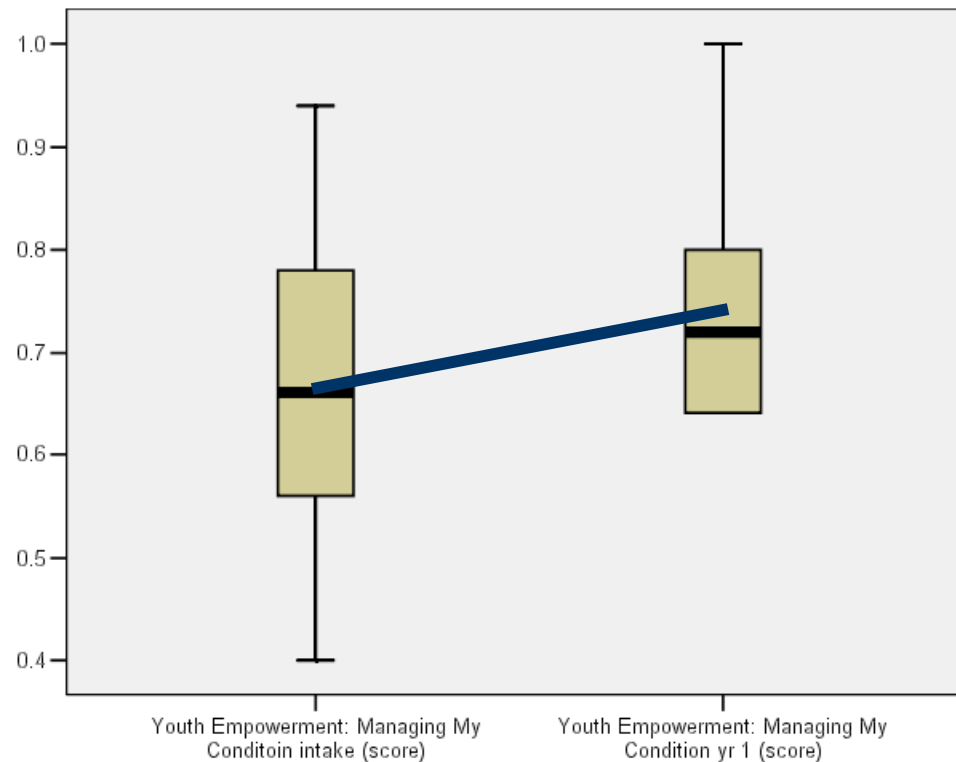
From the YSS: Intake mean: .82 Year 1 mean: .90

Service Coordination Scale (youth): Intake to Year 1



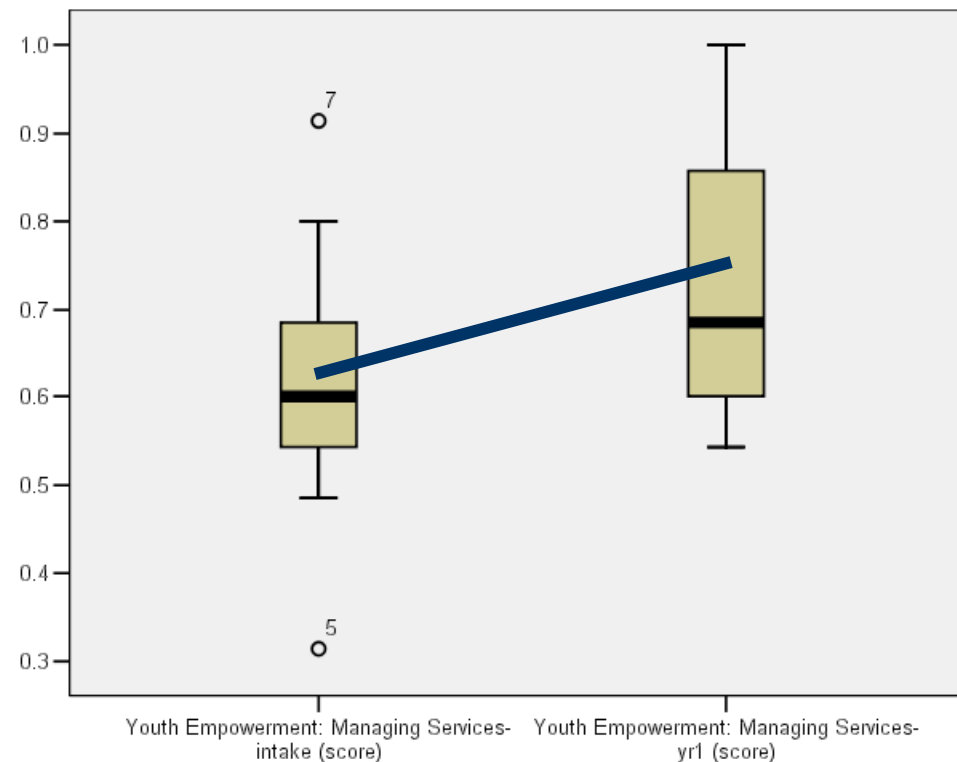
Intake mean: .78 Year 1 mean: .89

Youth Empowerment- Managing My Condition



Youth Empowerment, Self Subscale:
Intake mean: .67 Year 1 mean: .76

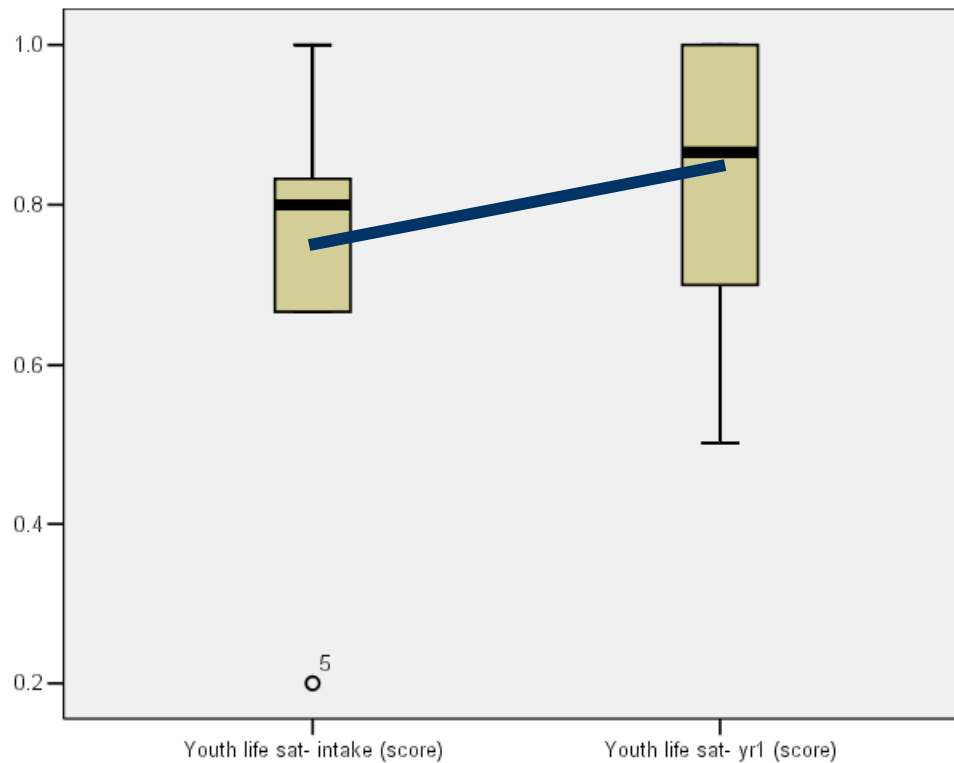
Youth Empowerment- Managing Services



Youth Empowerment, Services Subscale:
Intake mean: .62 Year 1 mean: .74

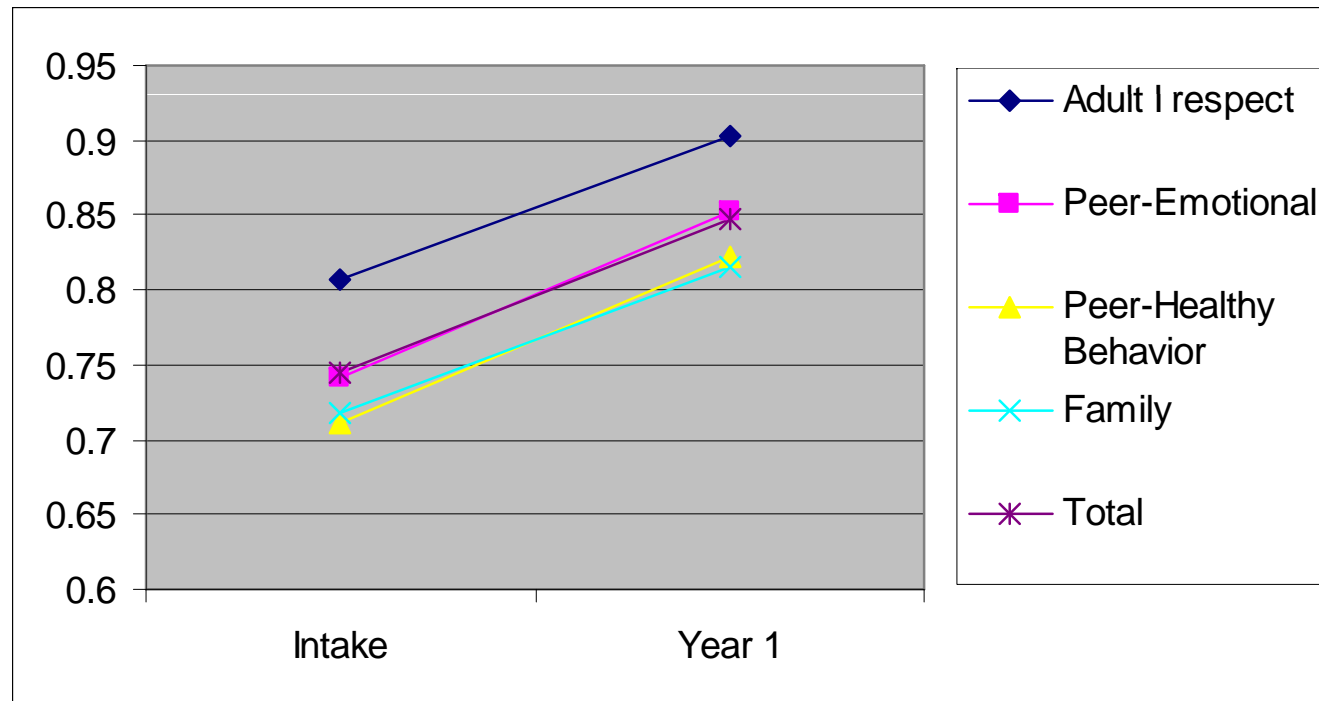
Youth Life Satisfaction

Intake to Year 1



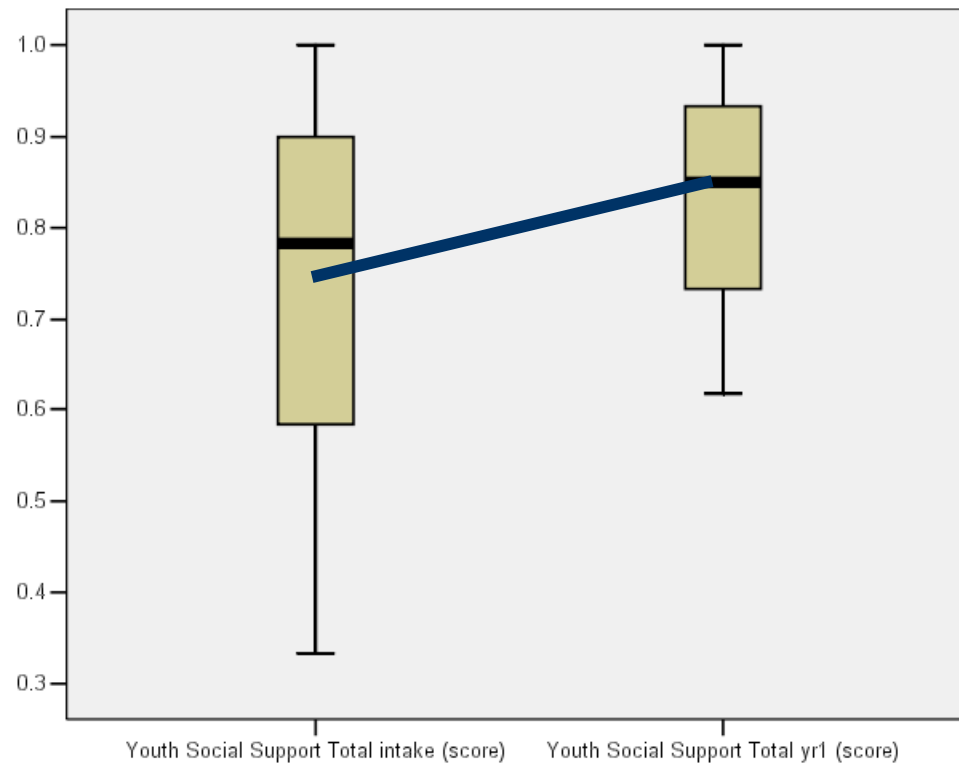
From the YSS: Intake mean: .73 Year 1 mean: .83

Youth Social Support: Subscales



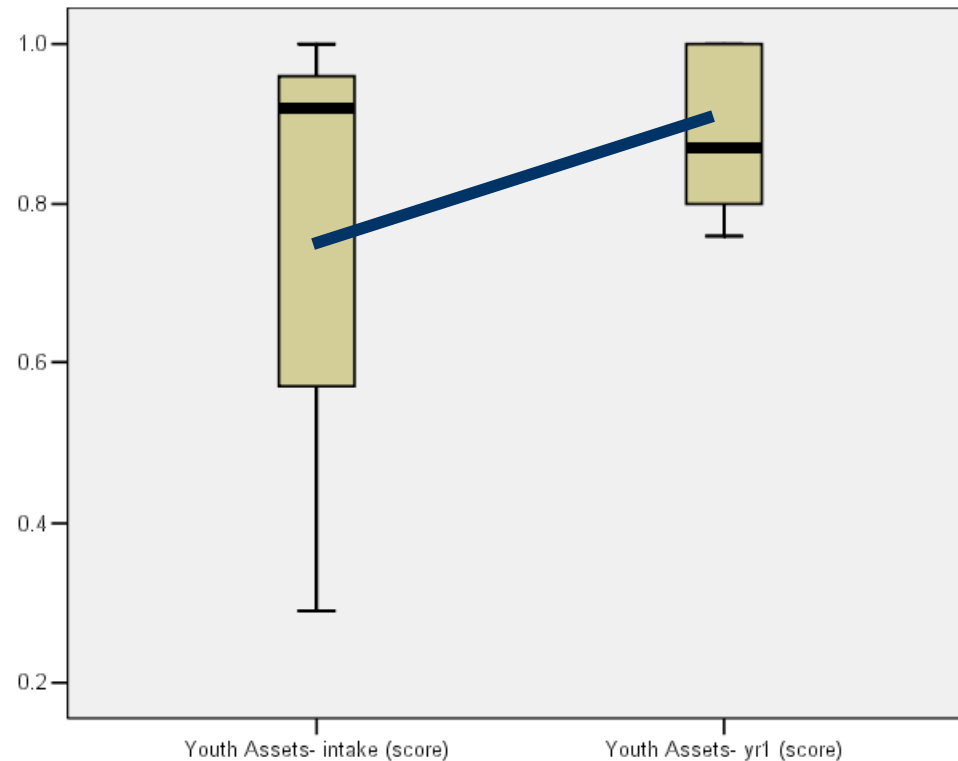
Adapted from Zimet's Social Support Scale

Youth Social Support



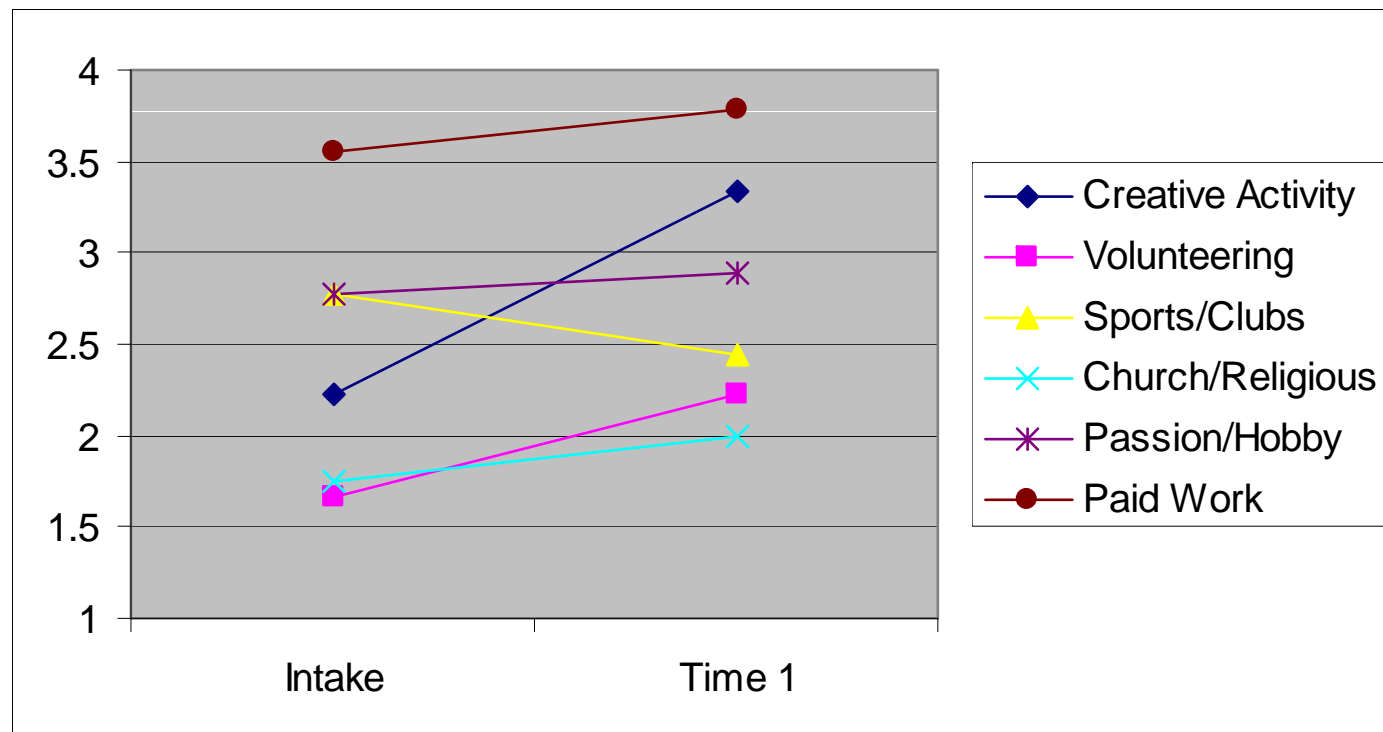
Intake mean: .74 Year 1 mean: .85

Youth Assets: Intake to Year 1 Comparison



Intake mean = .76 Year 1 mean = .89

Youth Strengths: Activities



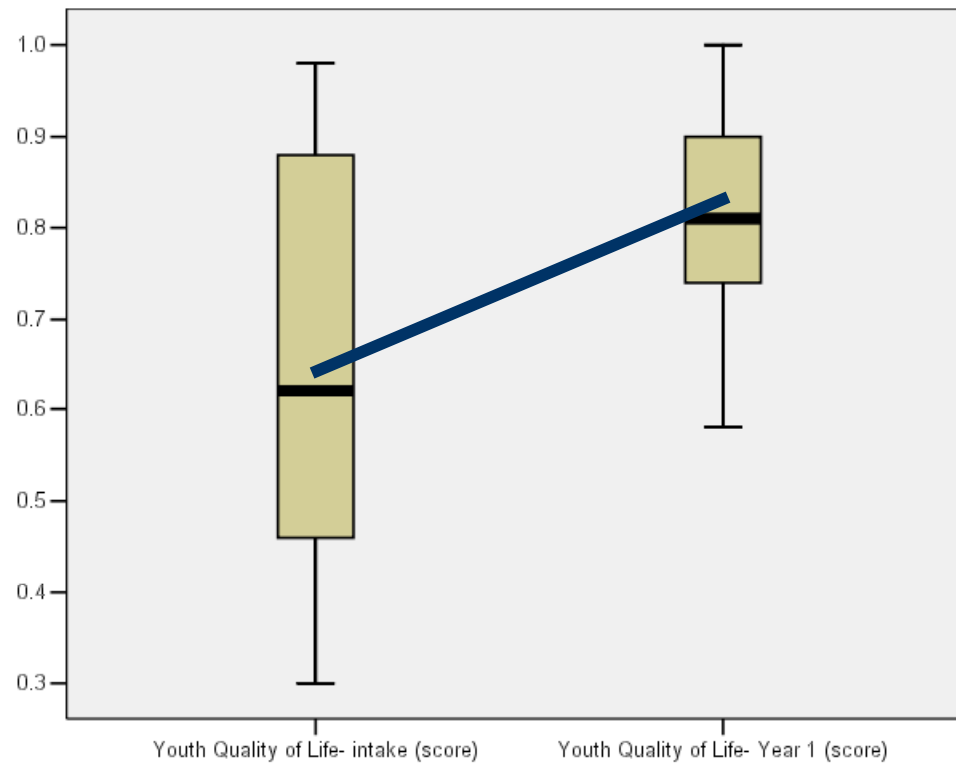
1 = Never 4 = 3 or more hours/week



Youth: Drug and Alcohol Self Report

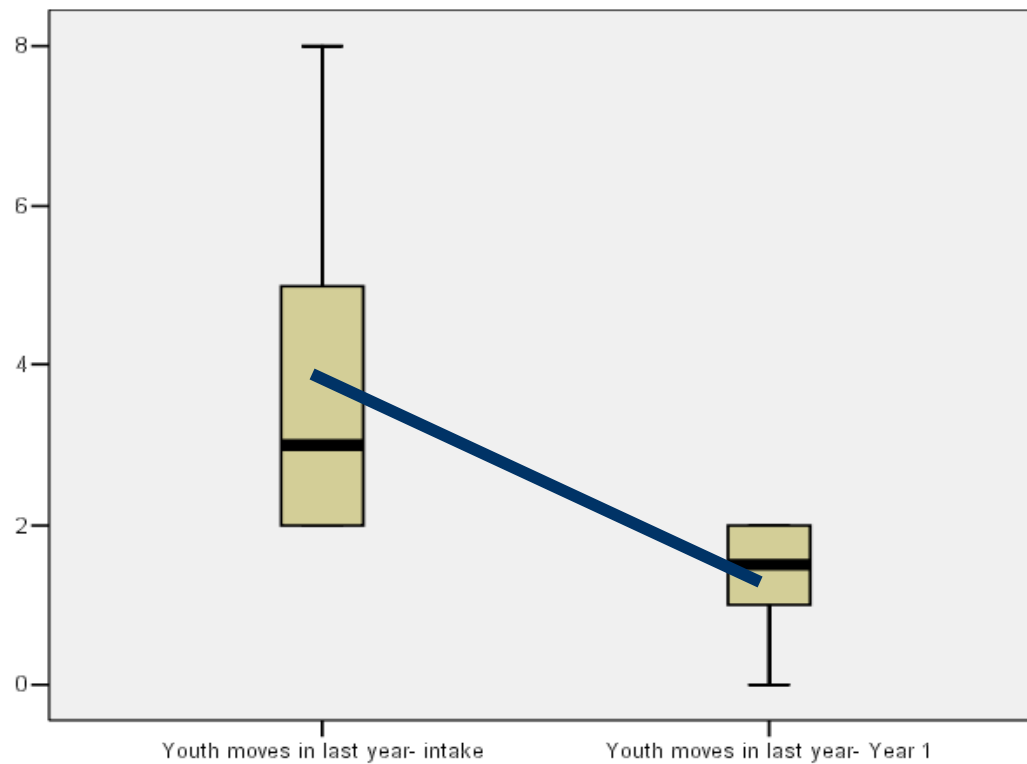
- ◆ Only one youth reported alcohol use at intake, by 1 year, this was up to three, but all reported use in the least frequent category (once per week or less) and said they'd never had more than 4 drinks at once
- ◆ Three youth reported drug use at intake, by 1 year this had decreased to two. All reported infrequent use

Youth Global Quality of Life



Intake mean: .64 Year 1 mean: .81

Youth Moves in Last Year (youth report)



Intake mean: 3.75 Year 1 mean: 1.44