

# Oregon Children's Wraparound Initiative



## News at a Glance

November 2008

- ✓ Getting started with wraparound - page 1
- ✓ Tips on Local Implementation - page 2
- ✓ How to get more information - page 2

[www.wraparoundoregon.org/statewide](http://www.wraparoundoregon.org/statewide)

## Ready for wraparound?

### Local readiness checklist

This checklist helps to identify communities that are organized, prepared and committed to implementing a “system of care” approach. Elements to be assessed includes:

- Leadership
- Staffing
- Meeting time and place
- Stakeholder involvement (families, youth, local governmental leadership, child serving agencies, volunteer groups, faith based groups, philanthropy, business, etc)
- Work groups and committees
- Communication and dissemination of information
- Outreach to broad community, inclusive of dominant and non-dominant cultures
- Linkage to Statewide Initiative efforts
- Acquisition of resources—both human and fiscal (e.g. in-kind and dollars)
- Ability to complete the steps on the implementation map (next page)
- Demonstration of nimble decision-making
- Capacity for financial/policy/data management
- Ability to make budgetary decisions under the purview of agents contributing to the blended pool
- Technical assistance from the state to ensure success for local communities

In addition, technical assistance should be provided to communities in completing the implementation steps outlined on the map on page two. ✘

## What you need to know

*From “Primer Hands On” Training by Sheila Pires*

A system of care incorporates a broad, flexible array of effective services and supports for a defined, multi-system population that is organized into a coordinated network, integrates care planning and management across multiple levels, is culturally and linguistically competent, builds meaningful partnerships with families and youth at service delivery, management, and policy levels, and has supportive policy and management infrastructure.

### Values and Principles of System of Care:

- Family-driven and youth guided
- Home and community based
- Strength-based and individualized
- Culturally and linguistically competent
- Integrated across child-serving systems
- Connected to natural helping networks
- Data-driven, and outcomes-oriented

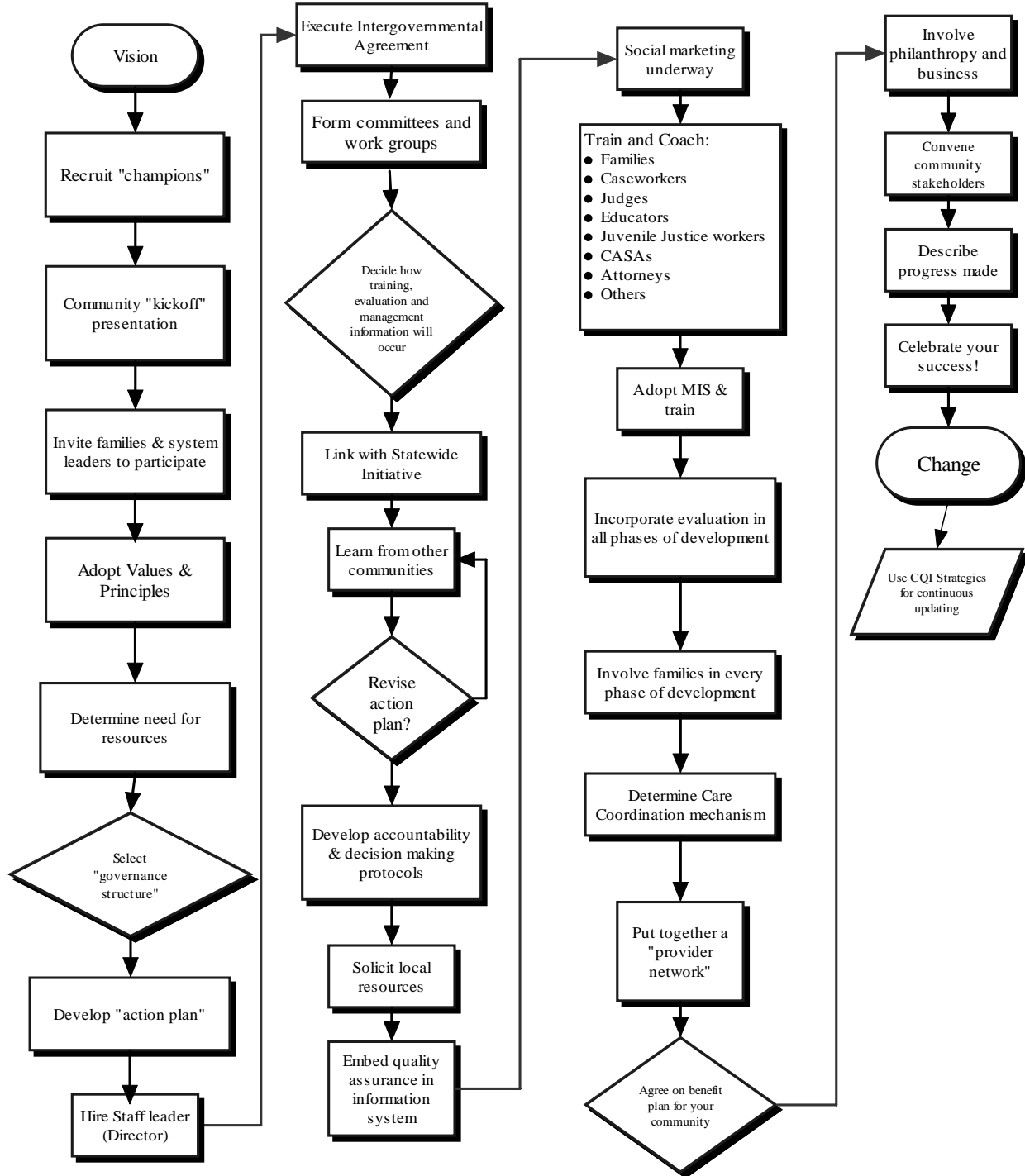
### Some System of Care Characteristics:

- Collaboration across agencies
- Partnership with families and youth
- Cultural and linguistic competence
- Blended, braided, or coordinated financing
- Shared governance across systems and with families and youth
- Shared outcomes across systems
- Child and family teams
- Single plan of care
- One accountable care manager
- Individualized service/supports “wrapped around” child/youth & family ✘

See next page for local implementation “tips”

# Oregon Children's Wraparound Initiative

## Tips on Local Implementation



If you would like to be updated on the progress of this initiative, please sign up for the Listserv at: <http://listsmart.osl.state.or.us/mailman/lisinfo/staatewraparound>. You can also visit the website at [www.wraparoundoregon.org/statewide](http://www.wraparoundoregon.org/statewide). Contact Marcia Hille, Team Leader, at (503) 320-3007 or at [marcia.hille@periander.net](mailto:marcia.hille@periander.net) if you want additional information.

Helping children and families realize their hopes and dreams.