

Oregon Children's Wraparound Initiative



News at a Glance

October 2008

- ✓ Market Assessment - page 1
- ✓ Family & Youth Organization - page 1
- ✓ Wraparound organization chart - page 2

www.wraparoundoregon.org/statewide

Market Assessment

The Market Assessment Advisory Committee is charged with completing a market assessment to determine population need, service costs and the investment of resources to fully fund stages of implementation and infrastructure for the children's wraparound initiative. Members recently approved the selection of Dr. Neal Wallace as the researcher responsible for the market assessment. Dr. Wallace is an Associate Professor of Health Economics for the Division of Public Administration, Mark O. Hatfield School of Government, at Portland State University.

Project Plan:

A two-phase project plan involves generating initial estimates of prevalence and utilization, vetting estimates with expert local sources – making adjustments as necessary – and completing the report.

Phase One – completed by January 30, 2009 – will define and develop initial prevalence estimation and utilization, and collect necessary data. This phase will also compare prevalence and utilization, assess credibility and finalize initial prevalence, utilization and unmet need estimates.

Phase Two – completed by April 15, 2009 – will vet initial estimates with local sources in several counties.

The work during this phase will:

- Identify relevant county/localities.
- Develop questions for local experts.
- Contact and interview local sources.
- Review and assess local input.
- Establish report structure.
- Review initial draft.
- Complete final report. *

Family Organization

The Oregon Family Support Network (OFSN) is taking the lead on the formation of a Family and Youth Advisory Committee to develop a family-run, youth-guided organization with the capacity to provide services, supports, oversight and evaluation of the System of Care developed for the Statewide Children's Wraparound Initiative.

OFSN is in the process of forming a statewide family and youth sub-committee. This committee will have three main tasks:

- Advise and contribute to the development of a sustainable family-run, youth-guided organization.
- Assist in coordinating local family members and youth to gather data regarding unmet need and services for the market assessment.
- Help in mobilizing families and youth to participate in legislative activities in the 2009 session

OFSN is looking for families and youth from diverse cultures, religions, and socio-economic communities. Participating families and youth must be involved in at least two child-serving agencies and have experience receiving mental health and/or addiction-related services. This project is seeking representation from all regions of the state. OFSN is looking for individuals with private insurance, no insurance, or public insurance health care perspectives, as well as input from biological parents, adoptive parents, kinship families, foster parents and other caregivers. If you are interested in serving on this sub-committee, please contact Kris Anderson at: kris.anderson@ofsn.org. Put "Family and Youth Sub-Committee" in the subject line. Thank you for considering this committee. *

see next page for more News at a Glance

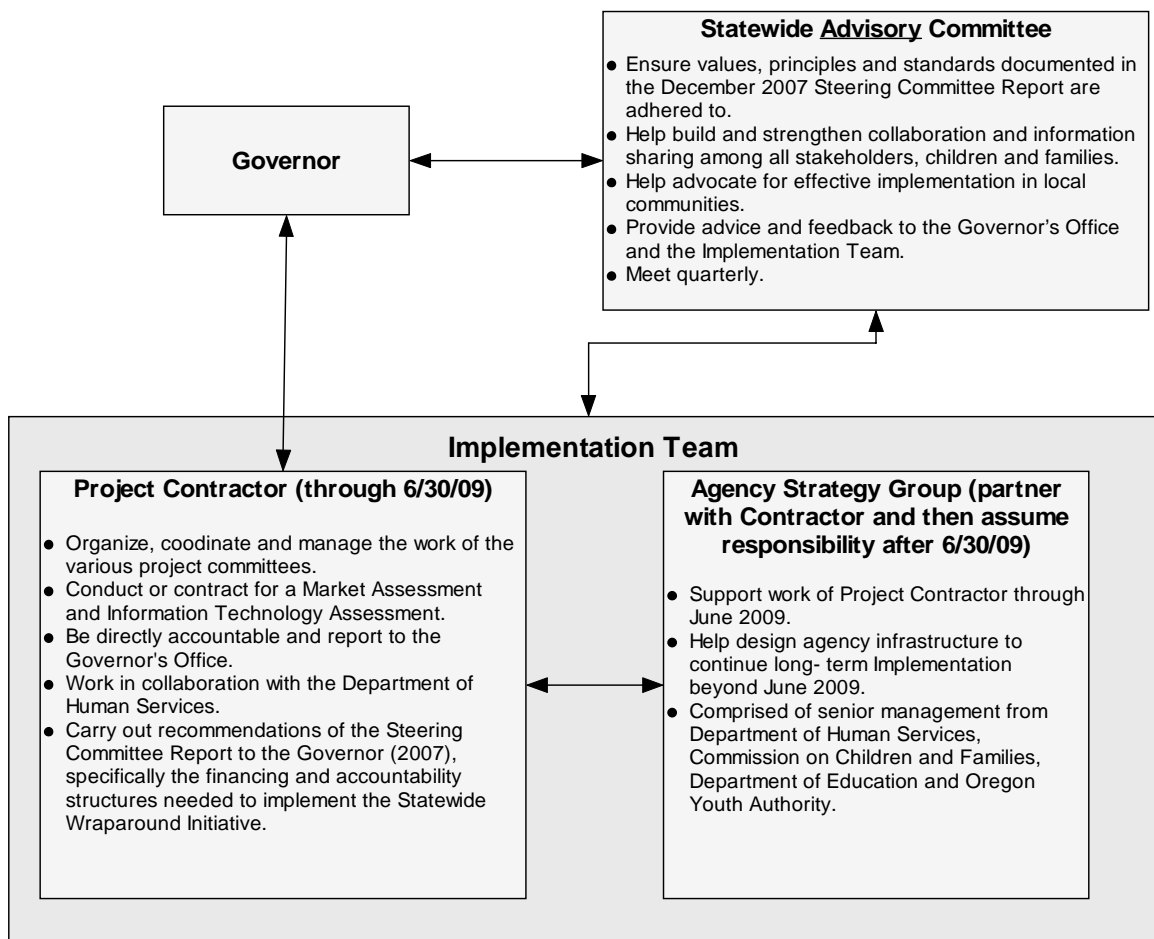
Helping children and families realize their hopes and dreams.

Oregon Children's Wraparound Initiative

Oregon Children's Wraparound Initiative Organization Chart

Statewide Children's Wraparound Initiative Implementation Phase

October 20, 2008 - DRAFT



Governor Appointed Advisory Committee

The first quarterly meeting of the Statewide Children's Wraparound Initiative Advisory Committee is Monday, November 24th in Salem. Members will represent the following sectors:

- Education
- Child service providers
- Youth
- Families
- Foundations
- Law/public defenders
- Law/juvenile district attorney
- County juvenile justice
- Academic community
- County mental health
- Business
- Judicial
- Law enforcement
- Early childhood
- Head Start
- Health plans
- Pediatric/psychiatrist *

Helping children and families realize their hopes and dreams.